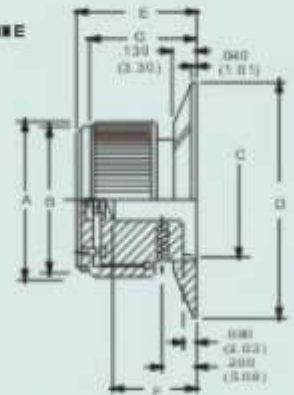


**Description**

- Material: Aluminum
- Push to turn with line indicator on skirt

NO. 6-32 SET SCREW TWO PLACES  
EXCEPT 42030-1/2 IS  
NO. 1-40 SET SCREW TWO PLACES

INDICATOR LINE



1/8" SHAFT = .128" (3.20)  
1/4" SHAFT = .251" (6.35)

PART NO.	COLOR	A	B	C	D	E	F	G
42030-1	NATURAL	12.7	11.4	9.65	18.8	19.0	13.0	17.0
42030-2	BLACK	12.7	11.4	9.65	18.8	19.0	13.0	17.0
42030-3	NATURAL	19.0	17.3	14.9	28.3	19.0	13.0	17.0
42030-4	BLACK	19.0	17.3	14.9	28.3	19.0	13.0	17.0
42030-5	NATURAL	23.9	22.3	16.5	36.6	19.0	13.0	17.0
42030-6	BLACK	23.9	22.3	16.5	36.6	19.0	13.0	17.0

ISS	ECN	SIGN	DATE	ISS	ECN	SIGN	DATE

NOTICE  
ALL RIGHTS RESERVED.  
UNAUTHORISED USE,  
DISCLOSURE OR  
REPRODUCTION IN  
WHOLE OR IN PART IS  
STRICTLY PROHIBITED.

© 2006



**Durban Road, Bognor Regis**  
**West Sussex, UK, PO22 9QT**  
Tel: +44 (0) 1243 860626  
Fax: +44 (0) 1243 866626  
email: sales@westside-supplies.co.uk  
Web: www.westside-supplies.co.uk

STANDARD TOLERANCES  
NO PLACE DEC. ±0.5  
1 PLACE DEC. ±0.2  
2 PLACE DEC. ±0.1  
ANGULAR ±0.5°  
UNLESS STATED OTHERWISE  
SCALE: NTS

MATERIAL	
FINISH	

DRAWN	DATE	SIGN	DATE
RM	13/12/06		
TITLE MACHINED KNOBS			
DRAWING No 42030			A4