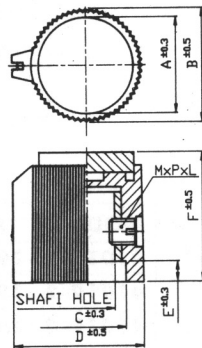


| PARK NO. | A | B | C | D | E | F |
|----------|------|------|------|------|-----|------|
| 41016-1 | 21.5 | 25.4 | 22 | 29.1 | 3.2 | 16.4 |
| 41016-2 | 16.7 | 19.5 | 13.2 | 23 | 3 | 16.2 |
| 41016-3 | 10.8 | 13.2 | 8.9 | 15 | 2.4 | 15.1 |



Description

- MATERIAL: ABS TOP
INLAYS
PHENOLIC
BODY
- KNOBS ARE GLUE ASSEMBLED WITH TOP INLAYS
- PLASTIC INLAYS HAVE RED, YELLOW, BLUE,
GREEN 4 COLOR REPAIDLY AVAILABLE

