

WESTSIDE SUPPLIES



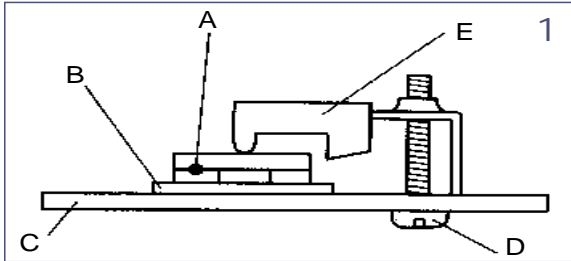
Screw Terminals, Transistor Holders & Bushings



NOMINAL TESTING METHOD

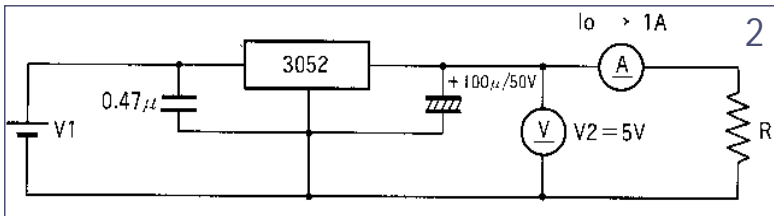
Under the mounting conditions shown in figure (1), the Emuden transistor holder is connected to the test circuit shown in figure (2). The temperature rise of the output fitting of the 3 pin regulator (Sanken SI3052V)

is measured by varying the power consumption and substitution heat radiation sheets (Denka M-series), figure (3).



TEST BED COMPONENTS

- A. Temperature measurement section (output metal fitting)
- B. Heat radiation
- C. Aluminium plate (130 x 70 x t3mm)
- D. Mounting screw
- E. Transistor bushing

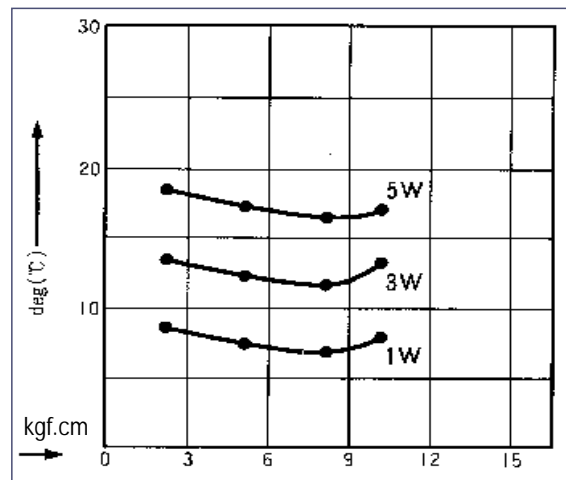


TEST CIRCUIT

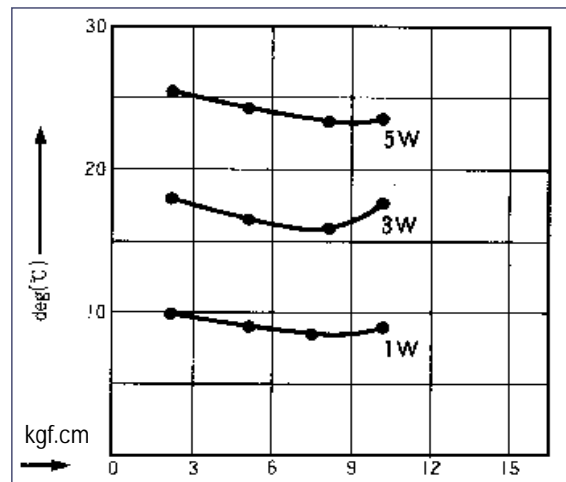
Power consumption of 3 pin regulator (SI3052V)
 V1 = 6V ----- 1W
 = 8V ----- 3W
 = 10V ---- 5W

3. TEST DATA

Thickness of heat and radiation sheet: 0.3
 Temperature rise deg. (°C)
 Tightening torque kgf.cm



Thickness of heat and radiation sheet: 0.4
 Temperature rise deg. (°C)
 Tightening torque kgf.cm



In the above test results, the tightening torque of 7 ± 1 kgf.cm is specified as the recommended torque range.

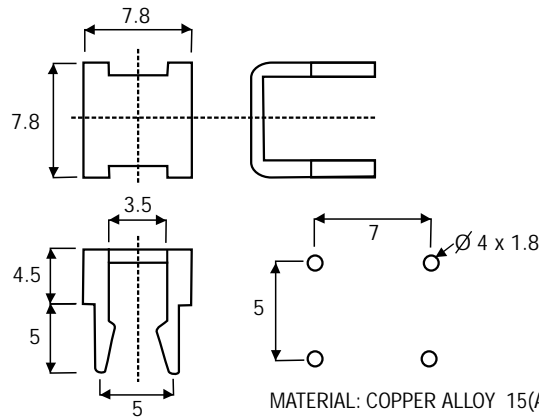
*Dimensions / materials are correct at time of going to press, but subject to change.
 Orders may be subject to MOQs / fixed pack sizes.
 Please contact the Sales Office for further information.*

SCREW TERMINALS

WESTSIDE SUPPLIES (01243) 860626

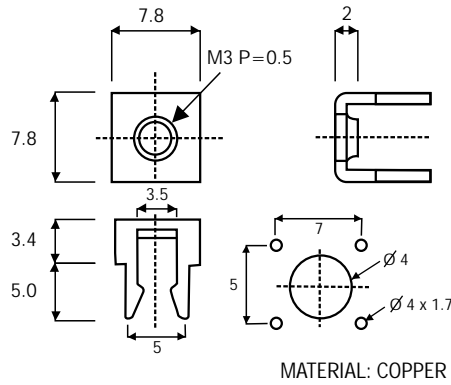


M1925



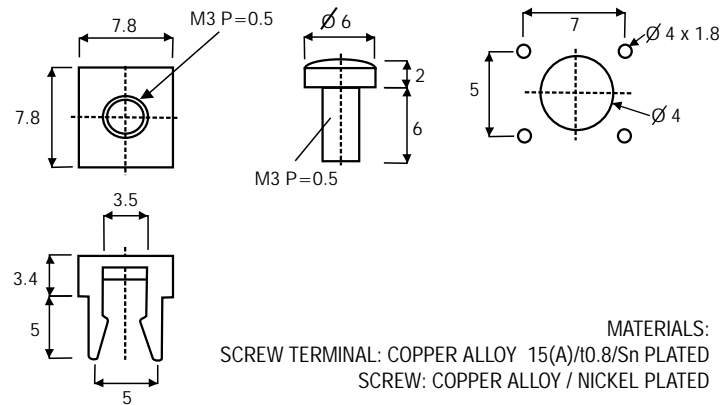
BLANKING COVER

M1700



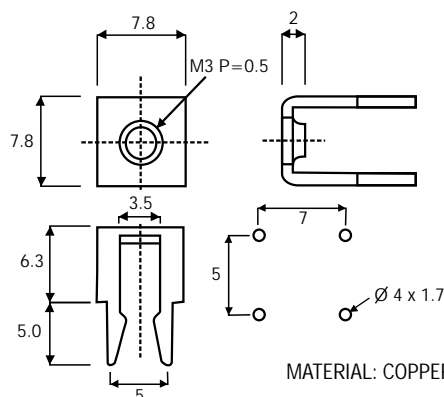
M3 VERTICAL

M1763



M3 VERTICAL WITH CAPTIVE SCREW

M1699



M3 VERTICAL

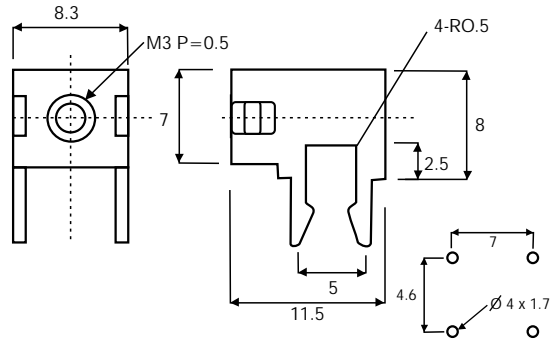
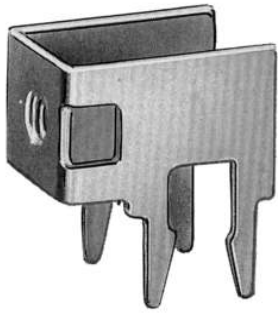


SCREW TERMINALS

WESTSIDE SUPPLIES (01243) 860626

M3 RIGHT ANGLED

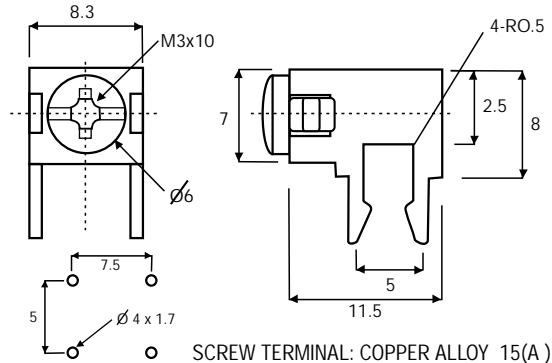
M1698



MATERIAL: COPPER ALLOY 15(A) /t0.8 / Sn PLATED

M3 RIGHT ANGLED WITH CAPTIVE SCREW

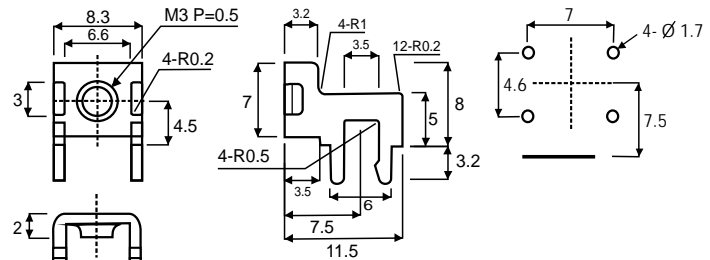
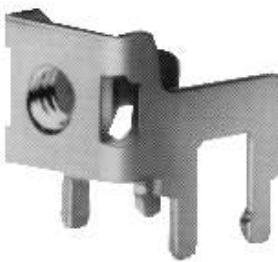
M1739



MATERIALS:
SCREW TERMINAL: COPPER ALLOY 15(A) /t0.8 / Sn PLATED
SCREW: COPPER ALLOY / NICKEL PLATED

M3 RIGHT ANGLED

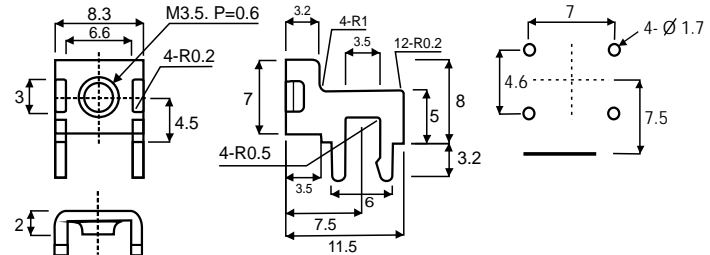
M1965



MATERIAL: COPPER ALLOY 15(A) /t0.8 / Sn PLATED

M 3.5 RIGHT ANGLED

M1966



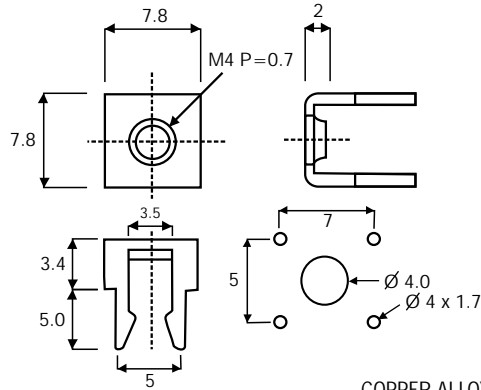
MATERIAL: COPPER ALLOY 15(A) /t0.8 / Sn PLATED

SCREW TERMINALS

WESTSIDE SUPPLIES (01243) 860626



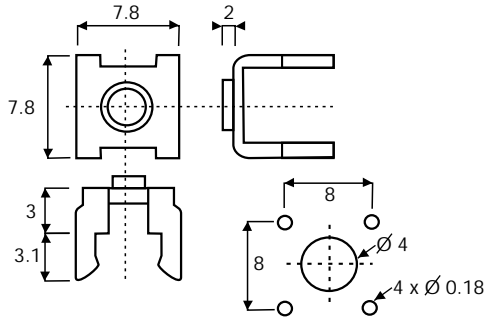
M1715



MATERIAL:
COPPER ALLOY 15(A) /t0.8 / Sn PLATED

M4
VERTICAL

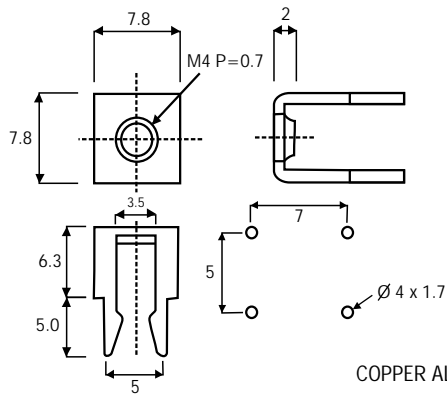
M1916



MATERIAL:
COPPER ALLOY 15(A) /t0.8 / Sn PLATED

M4
VERTICAL

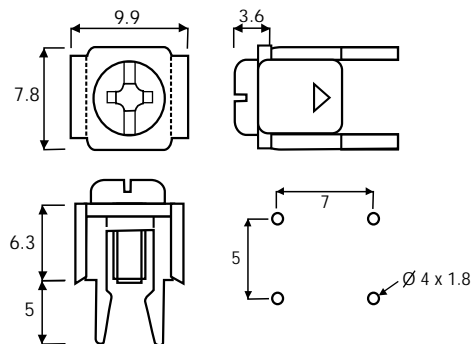
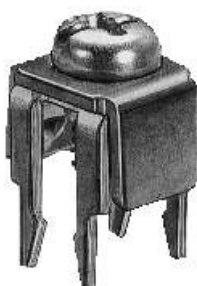
M1714



MATERIAL:
COPPER ALLOY 15(A) /t0.8 / Sn PLATED

M4
VERTICAL

M1919



MATERIALS:
TERMINAL: COPPER ALLOY 15(A) /t0.8 / Sn PLATED
SCREW: STEEL / NICKEL PLATED

M4 VERTICAL
CLAMP WITH
CAPTIVE SCREW
4

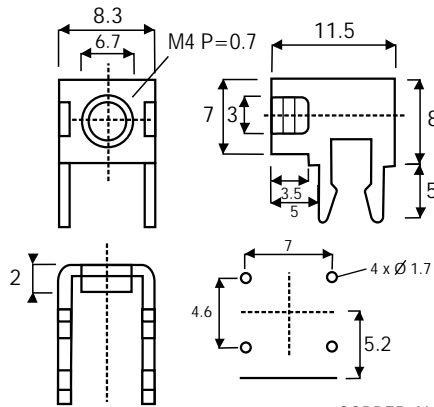
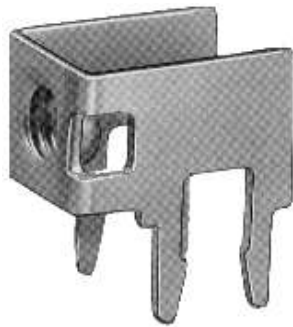


SCREW TERMINALS

WESTSIDE SUPPLIES (01243) 860626

M4 RIGHT ANGLED

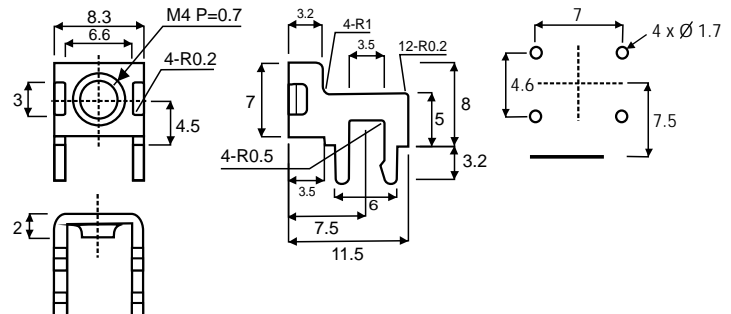
M1713



MATERIAL:
COPPER ALLOY 15(A) /10.8 / Sn PLATED

M4 RIGHT ANGLED

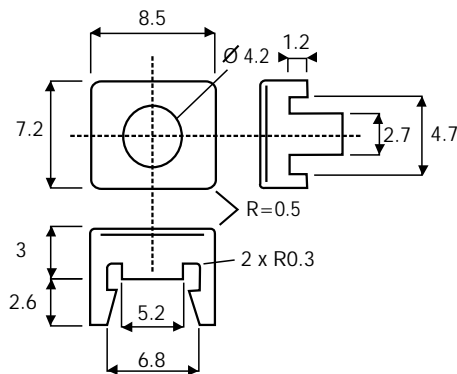
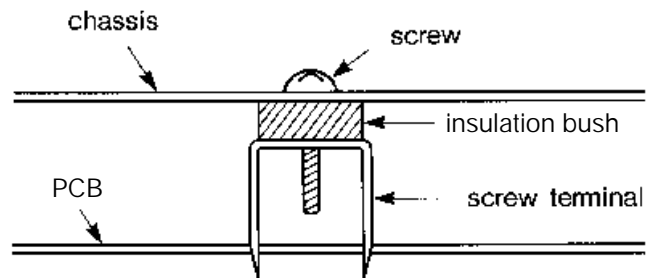
M1967



MATERIAL:
COPPER ALLOY 15(A) /10.8 / Sn PLATED

INSULATION BUSH

M1773



Suitable for use with:
M1698 M1713
M1699 M1714
M1700 M1715

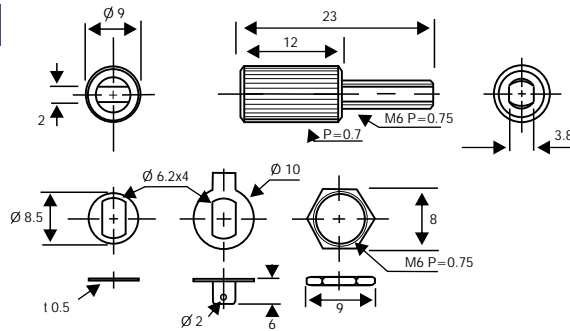
MATERIAL:
NYLON 66 / NATURAL

SCREW TERMINALS

WESTSIDE SUPPLIES (01243) 860626



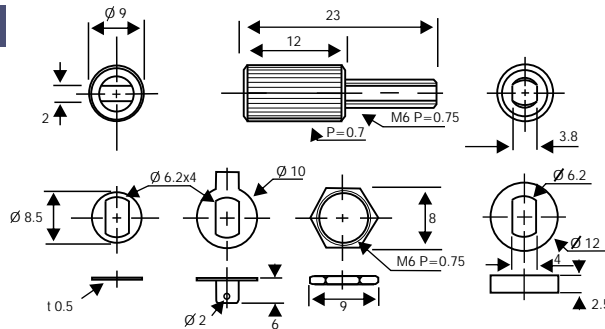
T5435



MATERIAL:
COPPER ALLOY / NICKEL PLATED

EARTH
TERMINAL

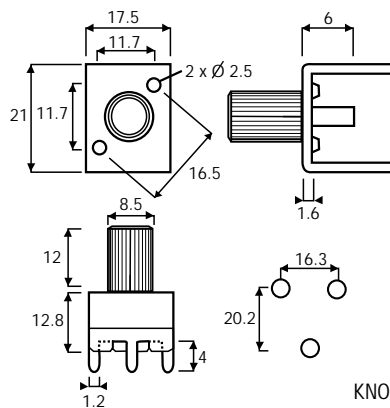
T5496



MATERIALS:
TERMINAL: COPPER ALLOY / NICKEL PLATED
WASHER: ABS

EARTH
TERMINAL

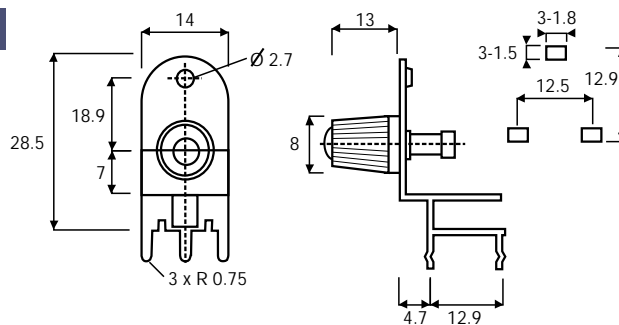
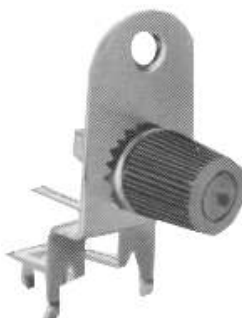
T5664



MATERIALS:
BASE: COPPER ALLOY / Sn PLATED
KNOB: COPPER ALLOY / NICKEL PLATED

VERTICAL EARTH
TERMINAL

T5943



MATERIALS:
TERMINAL: BRASS / Sn PLATED
KNOB: ABS

RIGHT ANGLED
EARTH TERMINAL
6

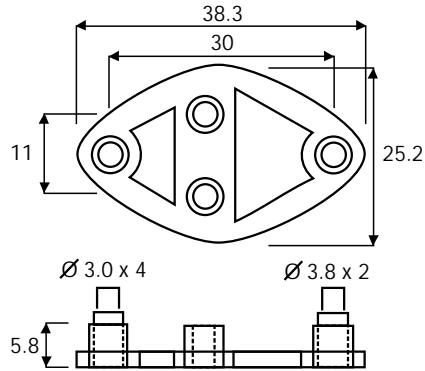


TRANSISTOR HOLDERS & BUSHINGS

WESTSIDE SUPPLIES (01243) 860626

TO3
WASHER

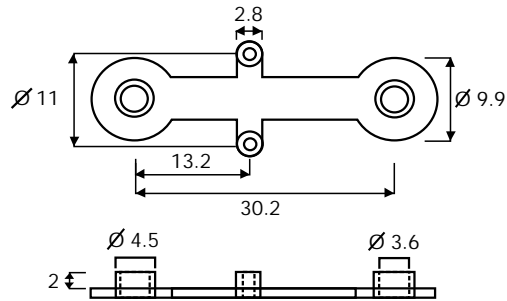
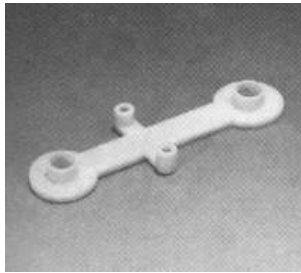
TR-4



MATERIAL: NYLON 66UL
FLAME CLASS: 94V-2
COLOUR: NATURAL

TO3
WASHER

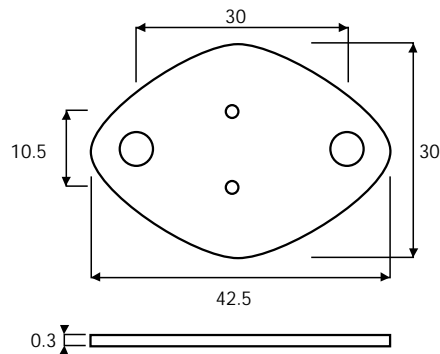
TR-6



MATERIAL: NYLON 66UL
FLAME CLASS: 94V-0
COLOUR: NATURAL

TO3
INSULATOR

T0-3

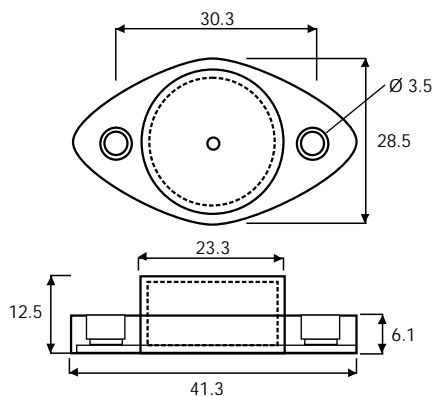


MATERIAL: SILICON (UL)
FLAME CLASS: 94V-0
COLOUR: GREY

TO3
COVER

7

TRC-1



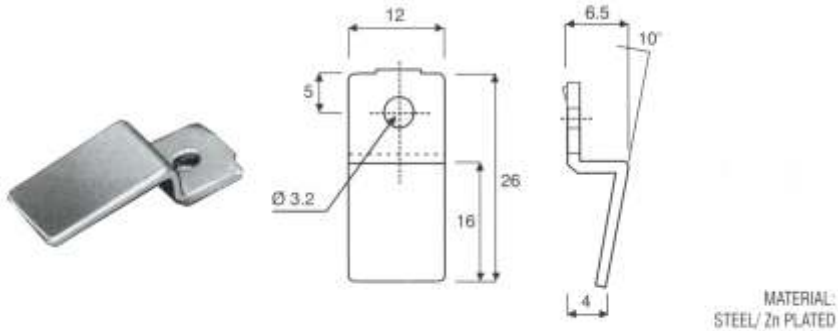
MATERIAL: NYLON 66 (UL)
FLAME CLASS: 94V-2
COLOUR: NATURAL

SCREW TERMINALS

WESTSIDE SUPPLIES (01243) 860626

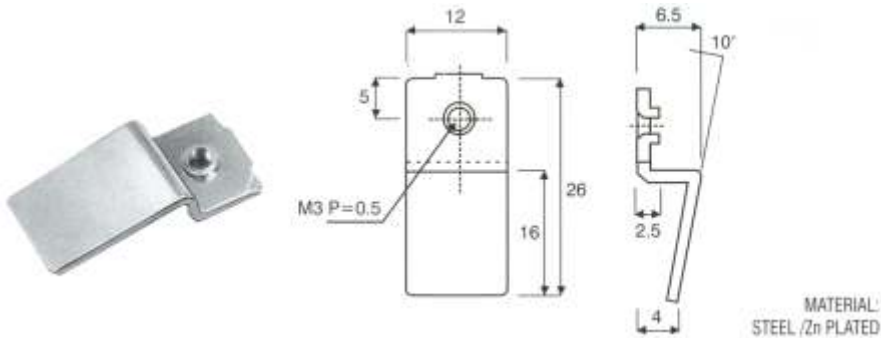


M1806



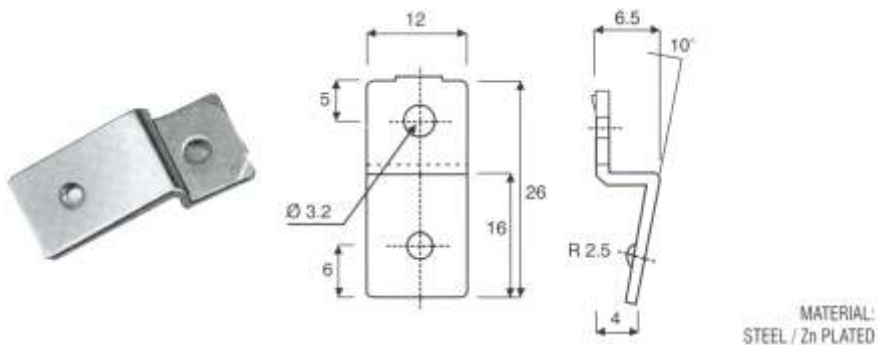
TO3P BUSHING
WITHOUT TAP

M1753



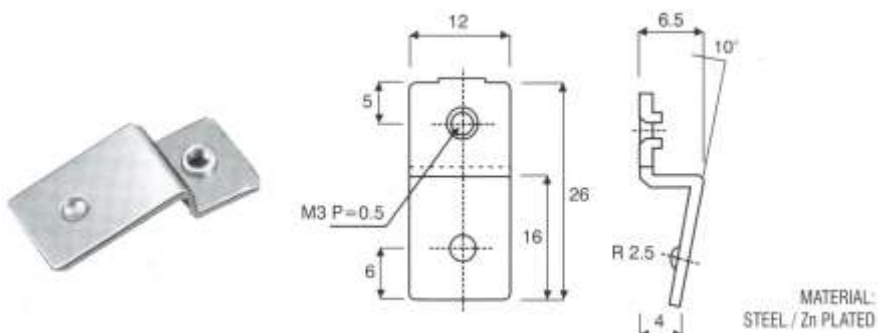
TO3P BUSHING
WITH TAP

M1729



TO3P BUSHING
WITHOUT TAP

M1728



TO3P BUSHING
WITH TAP

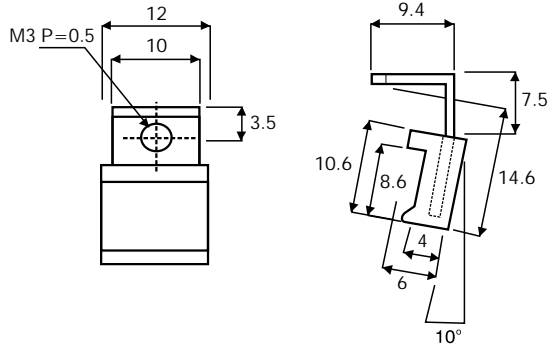
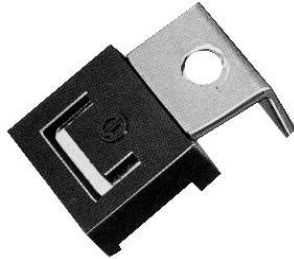


TRANSISTOR HOLDERS & BUSHINGS

WESTSIDE SUPPLIES (01243) 860626

TO3P SIDE BUSHING
WITHOUT TAP

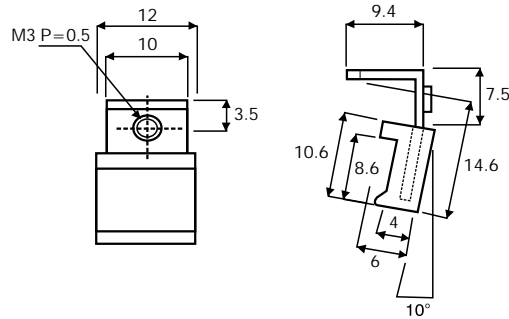
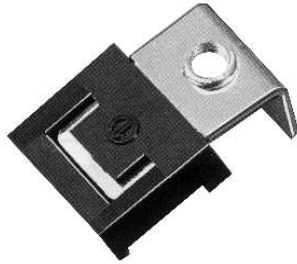
M1748-A



MATERIALS:
ANGLE: STEEL / Zn PLATED
INSULATOR: NYLON 66 / BLACK

TO3P SIDE BUSHING
WITH TAP

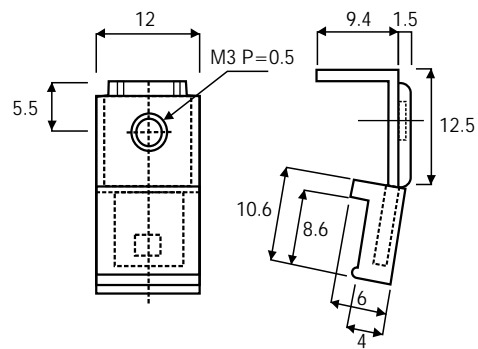
M1748



MATERIALS:
ANGLE: STEEL / Zn PLATED
INSULATOR: NYLON 66 / NATURAL

TO3P SIDE BUSHING
WITH TAP

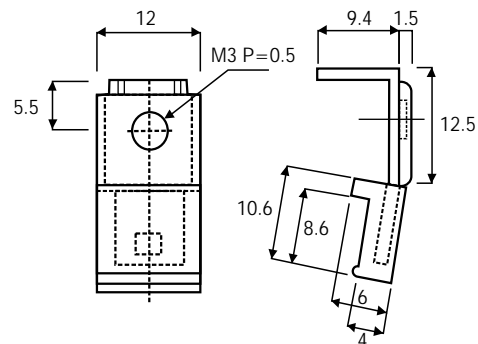
M1927



MATERIALS:
ANGLE: STEEL / Zn PLATED
INSULATOR: NYLON 66 / BLACK

TO3P SIDE
BUSHING
WITHOUT TAP

M1927-A



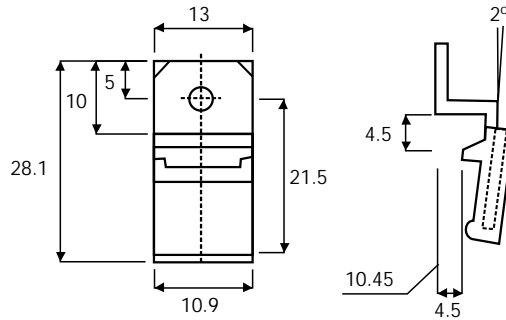
MATERIALS:
ANGLE: STEEL / Zn PLATED
INSULATOR: NYLON 66 / BLACK

TRANSISTOR HOLDERS & BUSHINGS

WESTSIDE SUPPLIES (01243) 860626



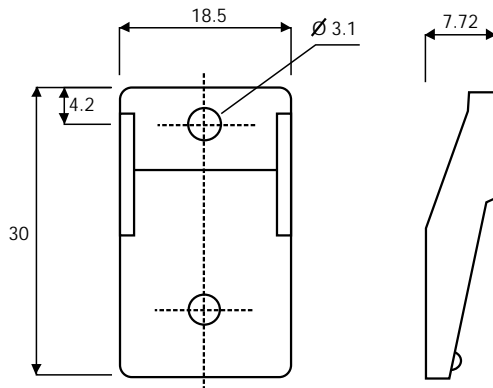
M1958



MATERIALS:
ANGLE: STEEL/Zn PLATED
INSULATOR: NYLON 66/NATURAL

TO3P
SIDE BUSHING

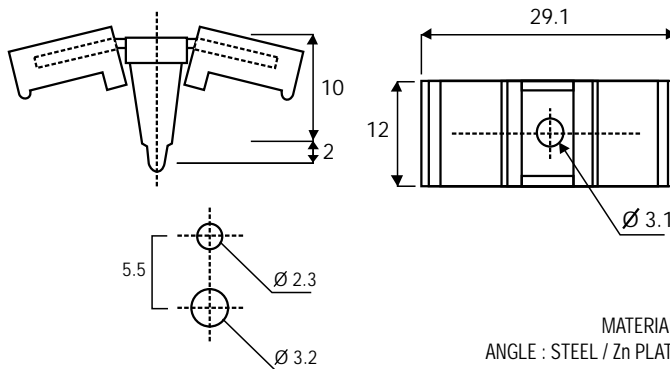
M1854



MATERIAL:
PPS 94v-0/ NATURAL

TO3P MOULDED
BUSHING

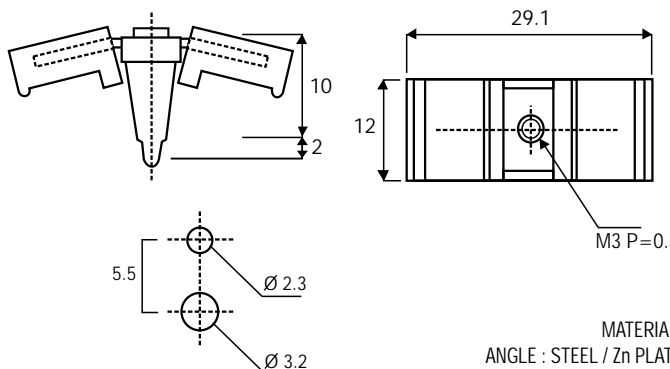
M1845



MATERIALS:
ANGLE : STEEL / Zn PLATED
INSULATOR: NYLON 66 / NATURAL

TO3P DUAL SIDE
BUSHING W/OUT TAP

M1845-A



MATERIALS:
ANGLE : STEEL / Zn PLATED
INSULATOR: NYLON 66 / NATURAL

TO3P DUAL
BUSHING
WITH TAP

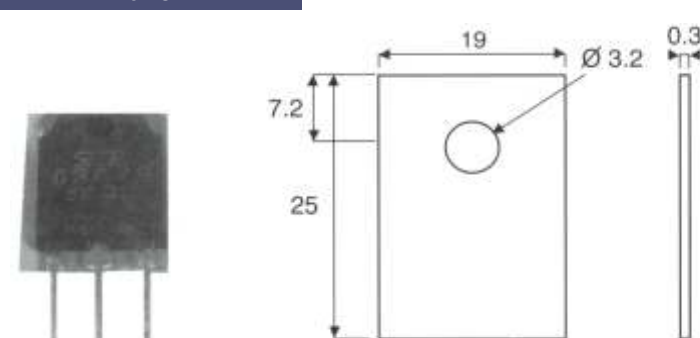


TRANSISTOR HOLDERS & BUSHINGS

WESTSIDE SUPPLIES (01243) 860626

TO3P
INSULATOR

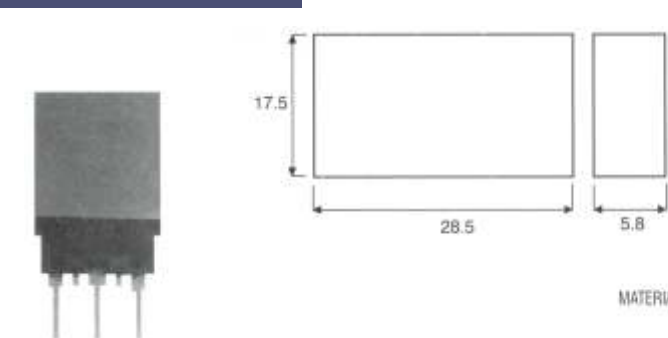
TO-3P



MATERIAL: SILICON (UL)
FLAME CLASS: 94V-0
COLOUR: GREY

TO3P INSULATOR
COVER

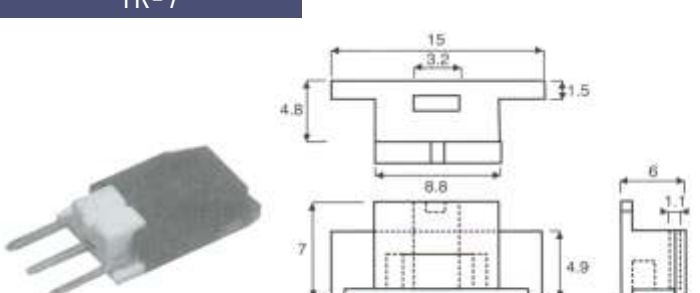
TO-3PCV



MATERIAL: 0.45mm SILICON (UL)
FLAME CLASS: 94V-0
COLOUR: GREY

TO3P
HOUSING

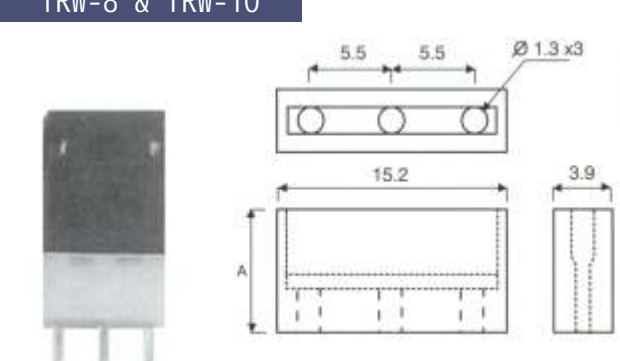
TR-7



MATERIAL: PBT (UL)
FLAME CLASS: 94V-0
COLOUR: NATURAL

TO3P
SPACERS

TRW-8 & TRW-10



PART NO	A	PACKAGE
TRW-8	8.0	1000
TRW-10	10.0	1000


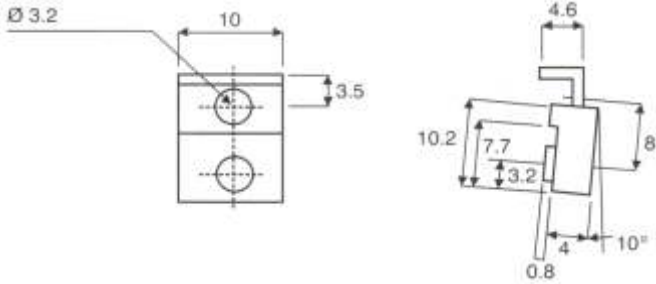
MATERIAL: NYLON 66UL
FLAME CLASS: 94V-2
COLOUR: NATURAL

TRANSISTOR HOLDERS & BUSHINGS

WESTSIDE SUPPLIES (01243) 860626



M1749-A


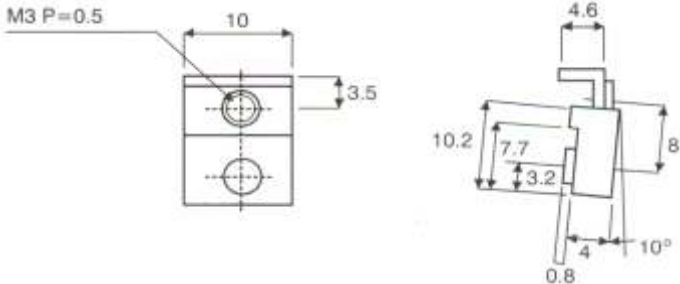



PART NUMBERS:
M1749 includes mica sheet
M1749-A is without mica

MATERIALS:
ANGLE : STEEL / Zn PLATED
INSULATOR: NYLON 66 / NATURAL

TO220 BUSHING
WITHOUT TAP

M1744-A


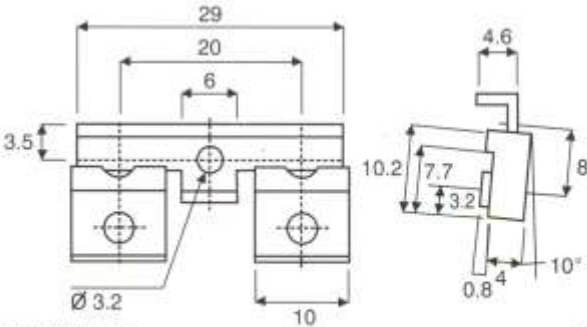



PART NUMBERS:
M1744 includes mica sheet
M1744-A is without mica

MATERIALS:
ANGLE : STEEL / Zn PLATED
INSULATOR: NYLON 66 / NATURAL

TO220 BUSHING
WITH TAP

M1750-A


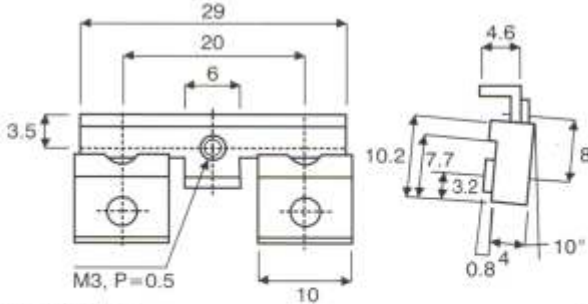



PART NUMBERS:
M1750 includes mica sheet
M1750-A is without mica

MATERIALS:
ANGLE : STEEL / Zn PLATED
INSULATOR: NYLON 66 / NATURAL

TO220 DUAL BUSHING
WITHOUT TAP

M1747-A

PART NUMBERS:
M1747 includes mica sheet
M1747-A is without mica

MATERIALS:
ANGLE : STEEL / Zn PLATED
INSULATOR: NYLON 66 / NATURAL

TO220 DUAL
BUSHING
WITH TAP

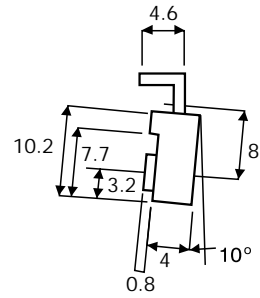
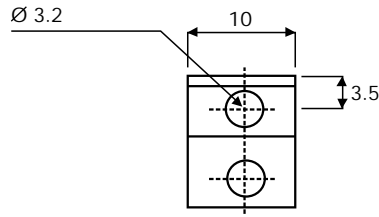
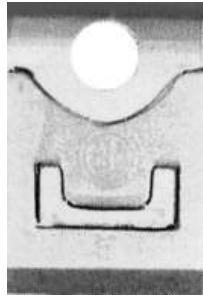


TRANSISTOR HOLDERS & BUSHINGS

WESTSIDE SUPPLIES (01243) 860626

TO220 BUSHING
WITHOUT TAP

M1749-(A)

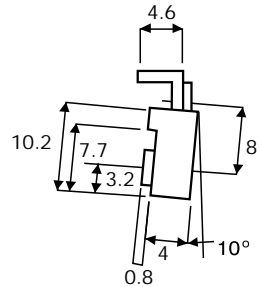
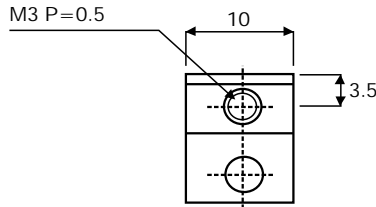
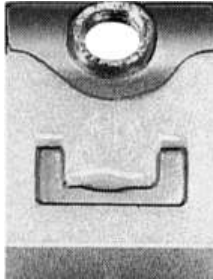


PART NUMBERS:
M1749 includes mica sheet
M1749-A is without mica

MATERIALS:
ANGLE : STEEL / Zn PLATED
INSULATOR: NYLON 66 / NATURAL

TO220 BUSHING
WITH TAP

M1744-(A)

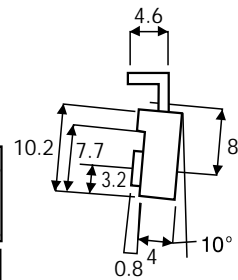
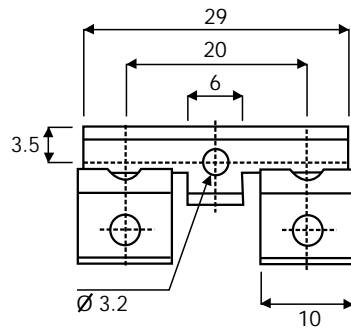
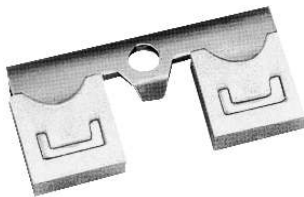


PART NUMBERS:
M1744 includes mica sheet
M1744-A is without mica

MATERIALS:
ANGLE : STEEL / Zn PLATED
INSULATOR: NYLON 66 / NATURAL

TO220
DUAL BUSHING
WITHOUT TAP

M1750-(A)

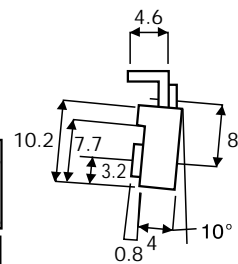
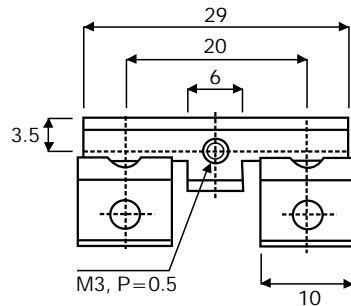
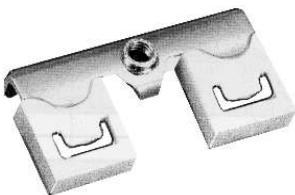


PART NUMBERS:
M1750 includes mica sheet
M1750-A is without mica

MATERIALS:
ANGLE : STEEL / Zn PLATED
INSULATOR: NYLON 66 / NATURAL

TO220 DUAL
BUSHING
WITH TAP

M1747-(A)



PART NUMBERS:
M1747 includes mica sheet
M1747-A is without mica

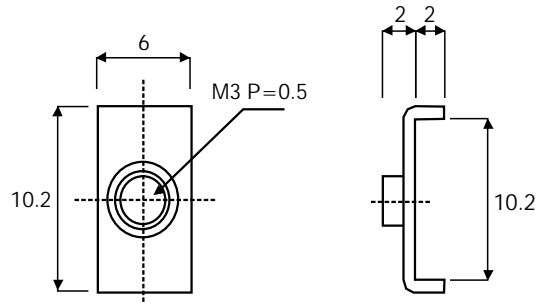
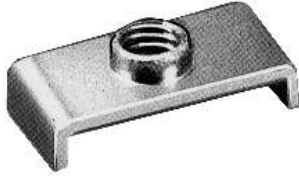
MATERIALS:
ANGLE : STEEL / Zn PLATED
INSULATOR: NYLON 66 / NATURAL

TRANSISTOR HOLDERS & BUSHINGS

WESTSIDE SUPPLIES (01243) 860626



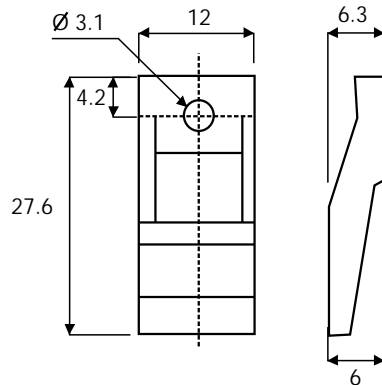
M1761



MATERIAL: STEEL / Zn PLATED

TO220 BUSHING
WITH TAP FULLPAC

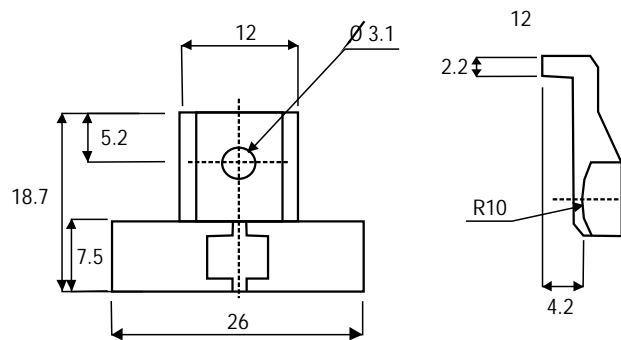
M1847



MATERIAL: PPS 94v-o/ NATURAL

TO220 MOULDED
BUSHING

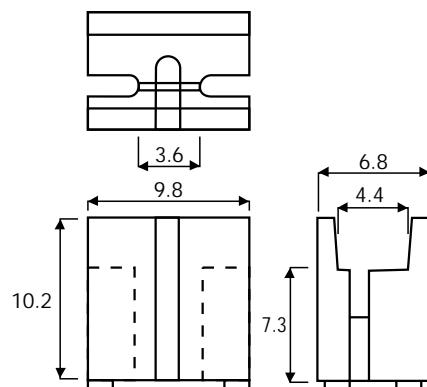
M1858



MATERIAL: PPS 94v-o/ NATURAL

TO220 DUAL
MOULDED BUSHING

TR-1



MATERIAL: NYLON 66 UL
FLAME CLASS: 94V-2
COLOUR: BLACK

TO220
HOUSING

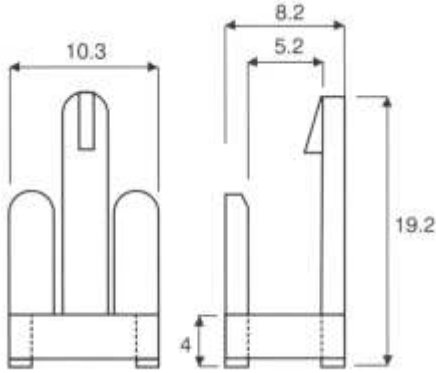



TRANSISTOR HOLDERS & BUSHINGS

WESTSIDE SUPPLIES (01243) 860626

TO220
HOUSING

TR-2

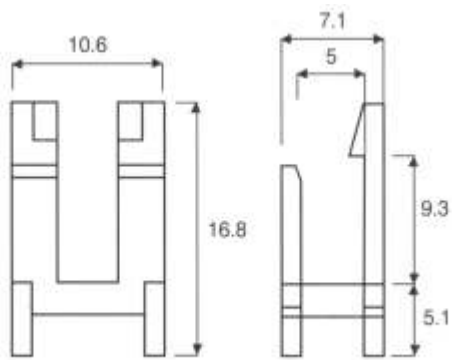



10.3
8.2
5.2
19.2
4

MATERIAL: NYLON 66 UL
FLAME CLASS: 94V-2
COLOUR: BLACK

TO220
HOUSING

TR-5

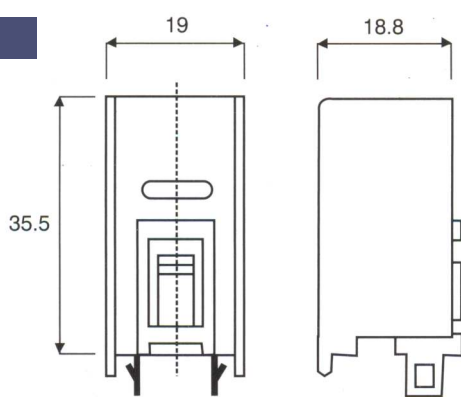
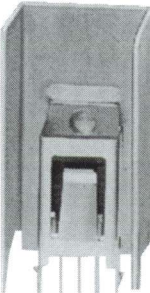


10.6
7.1
5
16.8
9.3
5.1

MATERIAL: NYLON 66 UL
FLAME CLASS: 94V-2
COLOUR: BLACK

To220 HOLDER
WITH HEATSINK

M1922



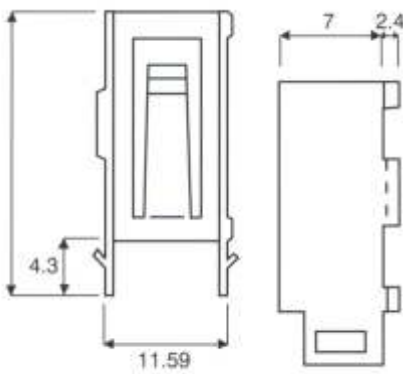

19
18.8
35.5

MATERIALS:
TRANSISTOR HOLDER:
COPPER ALLOY/ SOLDER PLATED
HEAT SINK: ALUMINIUM

TO220
HOLDER

15

M1922-2



18.4
4.3
11.59
7
2.4

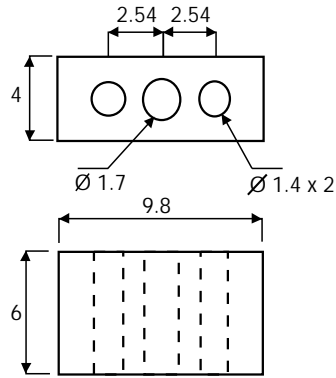
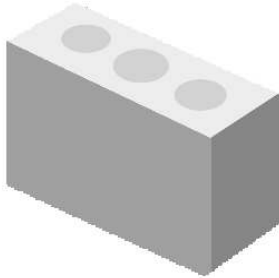
MATERIAL:
COPPER ALLOY/SOLDER PLATED

TRANSISTOR HOLDERS & BUSHINGS

WESTSIDE SUPPLIES (01243) 860626



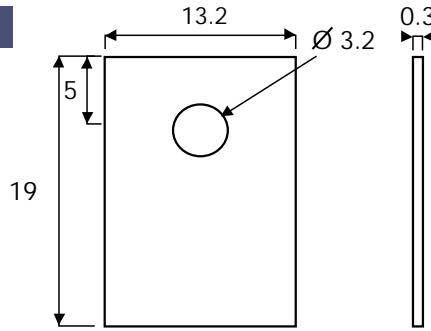
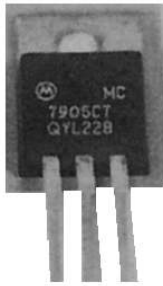
TR-3



MATERIAL: NYLON 66 UL
FLAME CLASS: 94V-2
COLOUR: NATURAL / BLACK

TO220
SPACER

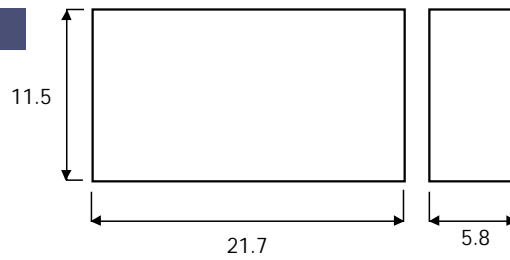
T0-220



MATERIAL: SILICON (UL)
FLAME CLASS: 94V-0
COLOUR: GREY

TO220
INSULATOR

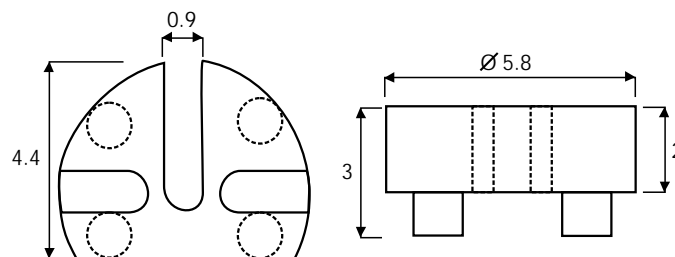
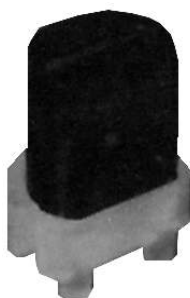
T0-220CV



MATERIAL: 0.45mm SILICON (UL)
FLAME CLASS: 94V-0
COLOUR: GREY

TO220 INSULATOR
COVER

T0-92



MATERIAL: NYLON 66 (UL)
FLAME CLASS: 94V-2
COLOUR: NATURAL

TO92
SPACER

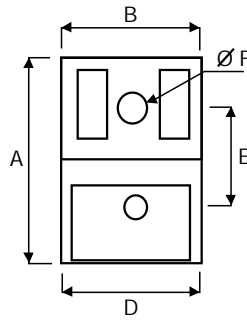


TRANSISTOR HOLDERS & BUSHINGS

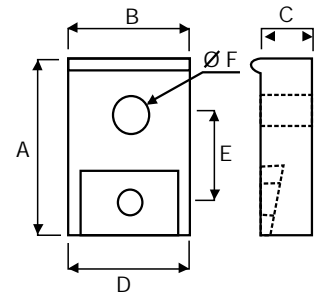
WESTSIDE SUPPLIES (01243) 860626

TRANSISTOR COVERS

TC SERIES



TC-3 ONLY



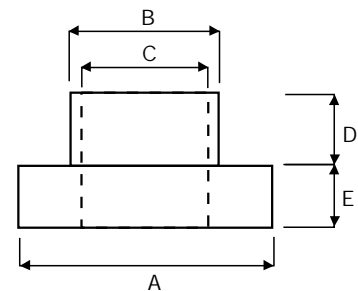
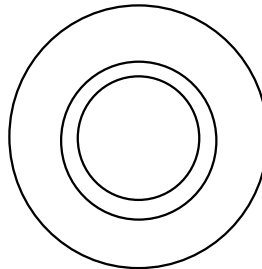
OTHERS

PART NO.	A	B	C	D	E	F		PACKAGE
TC-1	16.0	13.0	5.4	10.7	8.0	3.5	TO-220	500
TC-1A	19.3	13.0	5.4	10.7	10.0	3.6	TO-220	500
TC-1C	17.8	13.0	5.5	10.7	9.3	3.5	TO-220	500
TC-2	19.0	18.0	6.0	16.4	10.5	3.5	TO-218	500
TC-3	28.0	19.0	8.0	16.5	12.8	3.9	TO-3P	200

MATERIAL: PBT (UL)
 FLAME CLASS: 94V-0
 COLOUR: NATURAL/BLACK

TRANSISTOR WASHERS

TW SERIES



PART NO.	A	B	C	D	E		PACKAGE
TW-1	6.0	3.6	3.0	1.5	1.5	TO-220	2000
TW-2	6.2	3.5	3.0	3.0	1.5	TO-220	2000
TW-3	6.2	3.5	2.9	2.5	2.0	TO-220	2000
TW-4	6.0	3.5	3.0	2.0	2.0	TO-220	2000
TW-5	6.2	3.5	2.9	1.2	1.0	TO-220	2000
TW-6	6.2	3.5	2.9	1.4	1.2	TO-220	2000
*TW-7N	8.0	3.8	3.1	2.8	1.2	TO-3	2000
TW-8(N)	8.0	3.8	3.1	1.2	1.2	TO-3	2000
*TW-9N	10.0	6.0	5.0	5.0	1.0	WASHERS	2000
*TW-10N	10.0	5.0	4.0	4.0	1.0	WASHERS	2000
*TW-11N	9.5	6.3	4.5	1.2	1.2	WASHERS	1000
*TW-12-N	9.5	6.3	4.1	0.8	1.7	WASHERS	1000
*TW-14N	9.9	8.3	6.5	1.5	1.0	WASHERS	2000
TW-15	6.2	3.6	3.0	2.4	1.9	TO-220	2000
TW-16	6.1	3.5	2.9	1.6	1.4	TO-220	2000
TW-17	6.1	3.55	3.0	1.5	2.0	TO-220	2000

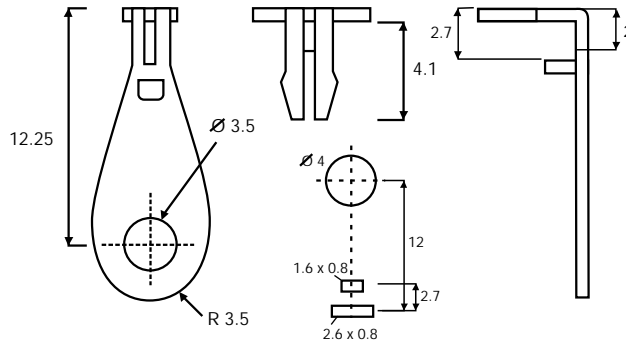
MATERIALS:
 TW-8(N): PBT V-0 or N66V-2 AVAILABLE
 ITEMS STARRED: N66V-2 ONLY
 OTHER ITEMS: PBT, N46, PPS, N66V-0, N66V-2
 COLOUR: NATURAL

ACCESSORIES

WESTSIDE SUPPLIES (01243) 860626



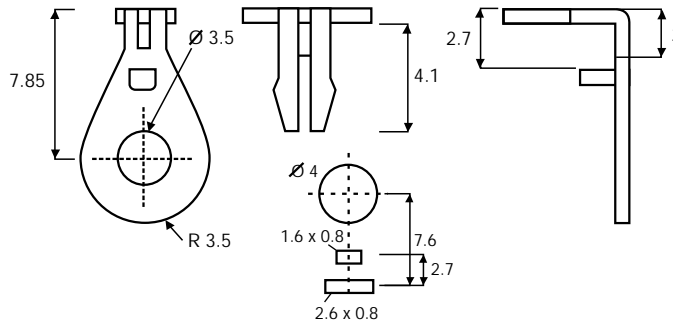
M1902-A



MATERIAL: COPPER ALLOY /Sn PLATED

3.5 EARTHING
TERMINAL

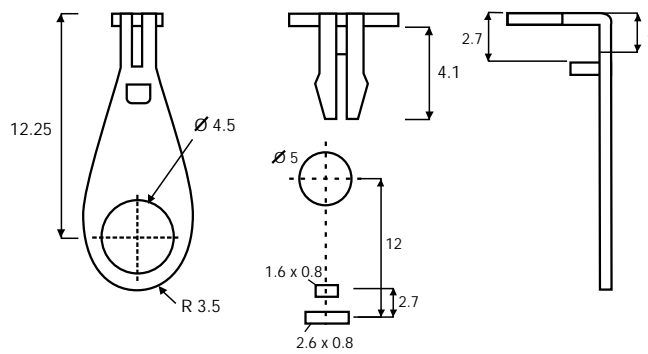
M1866-A



MATERIAL: COPPER ALLOY /Sn PLATED

3.5 EARTHING
TERMINAL

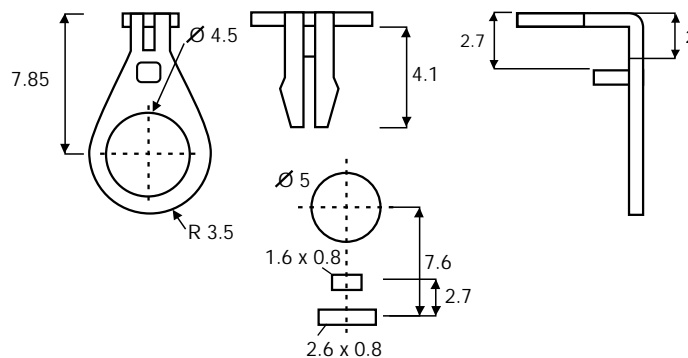
M1902



MATERIAL: COPPER ALLOY /Sn PLATED

4.5 EARTHING
TERMINAL

M1866



MATERIAL: COPPER ALLOY /Sn PLATED

4.5 EARTHING
TERMINAL

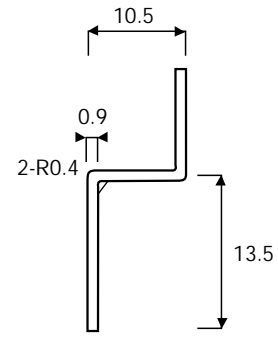
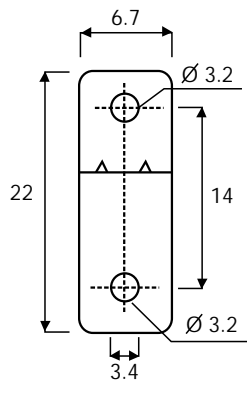


ACCESSORIES

WESTSIDE SUPPLIES (01243) 860626

METAL
EARTH

T10919



MATERIAL: COPPER ALLOY/NICKEL PLATED

PCB PIN & SPADE
TERMINALS

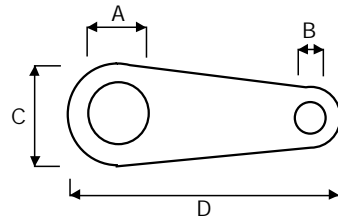
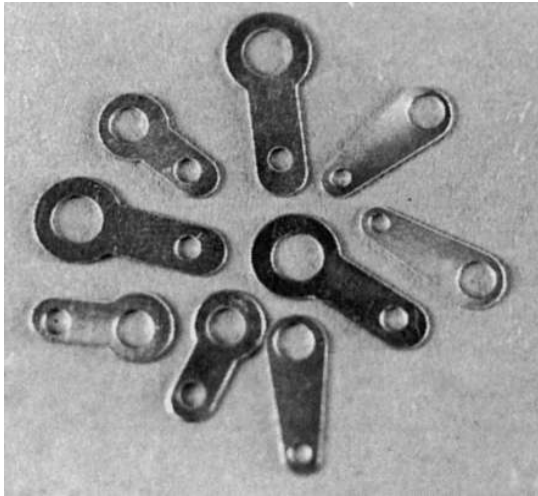


PART NO	UNIT	TAB SIZE	W	L	HOLE IN P.C.B	PACKAGE	
PCF250	In.	0.250X0.032	0.40	0.64	1.5φ	1000	
	mm	6.3X0.8	10.2	16.2	5		
PCFL250	In.	0.250X0.032	0.50	0.79	1.5φ	1000	
	mm	6.3X0.8	12.6	20.0	5		
PCF110	In.	0.110X0.020	0.44	0.52	1.3φ	1000	
	mm	2.8X0.5	11.0	13.2	5		
PC250	In.	0.250X0.032	0.354	0.630	1.3φ	1000	
	mm	6.3X0.8	9.0	16.0	5		
PCF250	In.	0.250X0.032	0.315	0.625	1.3φ	1000	
	mm	6.3X0.8	8.0	15.8	5		
PC205	In.	0.205X0.032	0.26	0.54	1.3φ	1000	
	mm	5.2X0.8	6.6	13.7	5		
PC187	In.	0.187X0.020	0.280	0.523	1.3φ	1000	
	mm	4.75X0.5	7.1	13.0	5		
PC110	In.	0.110X0.020	0.15	0.5	1.5φ	1000	
	mm	2.8X0.5	4	12.7	5		

MATERIAL: BRASS/Sn PLATED

ACCESSORIES

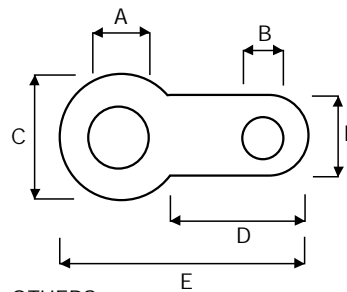
WESTSIDE SUPPLIES (01243) 860626



GND-1 & GND-3A

PART NO	A	B	C	D	THICKNESS
GND1	3.2	1.6	5.5	14.3	0.2
GND3A	4.1	2.4	6.5	15.5	0.2

PART NO	A	B	C	D	E	F	THICKNESS
GND2	3.2	2.1	6.4	7.0	12.6	4.0	0.25
GND3	4.3	2.0	8.0	10.3	17.7	4.6	0.3
GND4	5.2	2.1	9.9	10.6	19.6	5.1	0.3
GND5	8.3	1.9	10.0	5.3	15.0	4.0	0.3
GND6	9.7	2.0	13.0	8.7	21.5	4.0	0.4
GND10	6.5	2.1	10.0	10.6	19.9	5.1	0.3
GND11	9.0	2.0	13.0	-	30.0	4.0	0.3

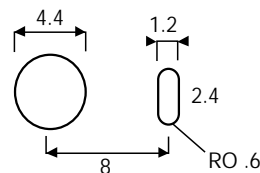
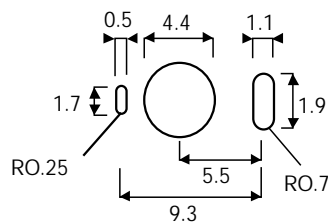
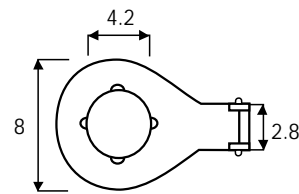
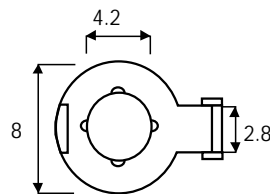
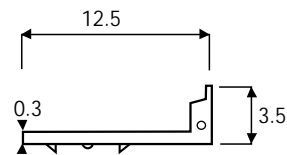
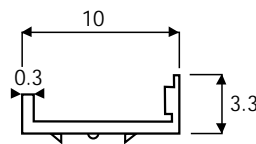
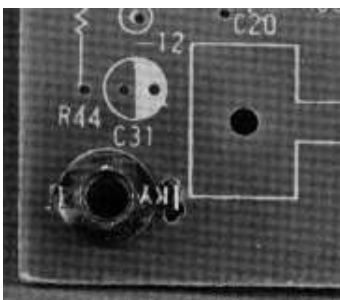


OTHERS

MATERIAL: BRASS / Sn PLATED

GROUND TERMINALS

GND-7 & GND-8



GND-7

GND-8

MATERIAL: PHOSPHOR BRONZE/NICKEL PLATED

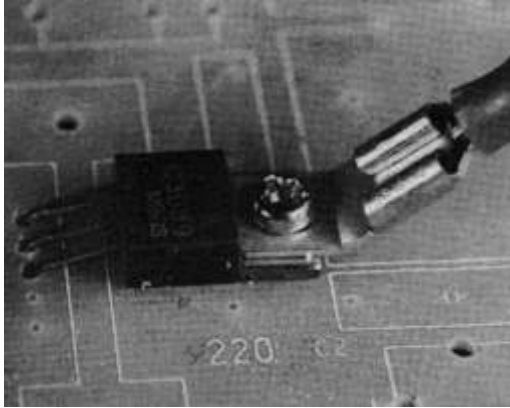
GROUNDING CONNECTORS



ACCESSORIES

WESTSIDE SUPPLIES (01243) 860626

SPADE TERMINALS



PART NO	UNIT	TAB SIZE	W	L	STUD SIZE	PACKAGE	
PC11250	IN	0.250 x 0.032	0.307	0.610	8#	1000	
	MM	6.3 x 0.8	7.8	15.5	4.3		
PC1L250	IN	0.250 x 0.032	0.315	0.709	8#	1000	
	MM	6.3 x 0.8	8.0	18.0	4.3		
PC1L187	IN	0.187 x 0.020	0.259	0.610	6#	1000	
	MM	4.75 x 0.5	6.6	15.5	3.5		
PC12250	IN	0.250 x 0.032	0.414	1.314	10#	1000	
	MM	6.3 x 0.8	10.6	33.4	5.3		
PC2L250	IN	0.250 x 0.032	0.414	1.15	10#	1000	
	MM	6.3 x 0.8	10.6	29.2	4.3		

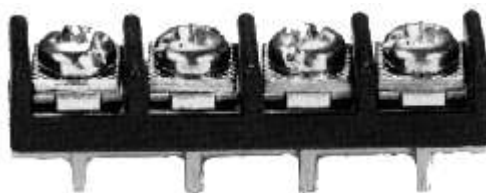
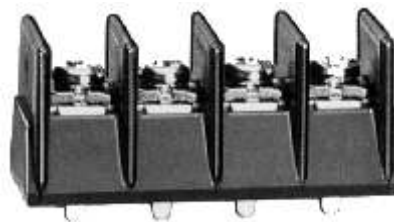
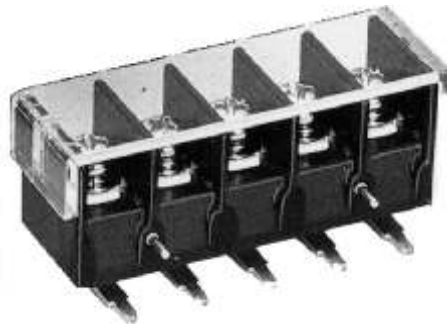
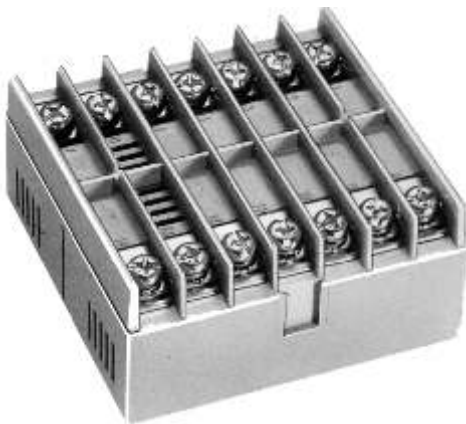
MATERIAL: BRASS /Sn PLATED

RELATED PRODUCTS

WESTSIDE SUPPLIES (01243) 860626



We are also able to offer a comprehensive range of PCB and chassis mount terminal blocks. Various sizes and configurations are available. Please contact the Sales Office for a catalogue and further details.



TERMINAL BLOCKS

**The WSL extensive
product range includes:**

- Audio Connectors & Terminations
- Battery Connectors & Holders
- BNC Connectors
- DC Power Jacks
- DIN Connectors
- Equipment Feet
- Mains Cables & Connectors
- RF Connectors
- Screw Terminals
- Switches & Potentiometers
- Telephone & Communication Jacks
- Terminal Blocks
- Transistor Holders & Bushings
- Custom moulded leads & rewireable plugs/sockets (including BNC, D, DC & audio jacks, din, mini-din & phono types)

We are also able to offer a custom design & specific sourcing service for all your connector requirements.



**WESTSIDE
SUPPLIES
LIMITED**

**'WESTSIDE'
SHRIPNEY ROAD
BOGNOR REGIS
WEST SUSSEX
UNITED KINGDOM
PO22 9NX**

TEL: +44 (0) 1243 860626
FAX: +44 (0) 1243 866626
EMAIL: sales@westside-supplies.co.uk
WEB: www.westside-supplies.co.uk